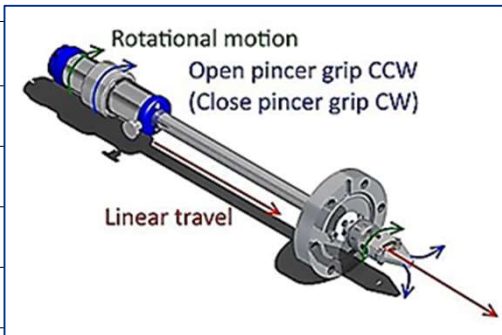
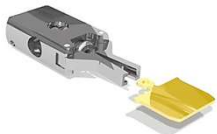


名称	ICF70 2軸直線回転導入機	チューブサポート付 2軸直線回転導入機	片側チューブサポート付 2軸直線回転導入機	ピンサー/チューブサポート 2軸直線回転導入機	
外観図					
製品コード	MDG40-XXXX-YYYY	MDG40-XXXX-YYYY-TSMD	MDG40-XXXX-YYYY-TSMDH	MDG40-XXXX-YYYY-PGWMS(OMH)-TSMD	
仕様	ストローク長(XXXX)	標準：100/150/200/250/300mm 特注：10 - 650mm			
	リトラクト長(YYYY)	標準：30mm 特注：22 - 200mm			
	直進力	23N			
	トルク	0.4Nm			
	許容加熱温度	最大200℃			
	圧力範囲	1E-11mbar - 1000mbar			
	構造材料	フルUHV適合材料			



**【オプション&アクセサリ】**

PGWMS(OMH) : ±2°  
ピンサー



PGWMSL(OMH) : ±2°  
ロングピンサー



PGWMS(CUST) :  
カスタマイズピンサー



ADOM02 :  
オミクロンピンサーアダプター



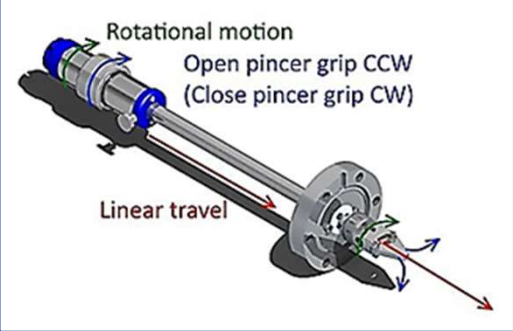
ADOMS :  
オミクロンピンサーアダプター



ADMRL :  
回転リミッター

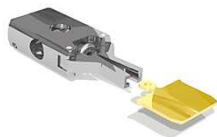


名称	回転リミッター付 2軸直線回転導入機	回転リミッター/チューブサポート付 2軸直線回転導入機	回転リミッター/片側チューブサポート付 2軸直線回転導入機
外観図			
製品コード	MDG40(RL)-XXXX-YYYY	MDG40(RL)-XXXX-YYYY-TSMD	MDG40(RL)-XXXX-YYYY-TSMDH

仕様	ストローク長 (XXXX)	標準 : 100/200/300/400/500mm カスタマイズ : 50 - 700mm	
	リトラクト長 (XXXX)	標準 : 30mm カスタマイズ : 10 - 250mm	
	直進力	30N	
	トルク	0.5Nm	
	許容加熱温度	200℃	
	圧力範囲	1E-11mbar - 1000mbar	
	構造材料	フルUHV適合材料	

**【オプション&アクセサリ】**

PGWMS(OMH) : ±2°  
ピンサー



PGWMSL(OMH) : ±2°  
ロングピンサー



PGWMS(OM) : ±8°  
ピンサー



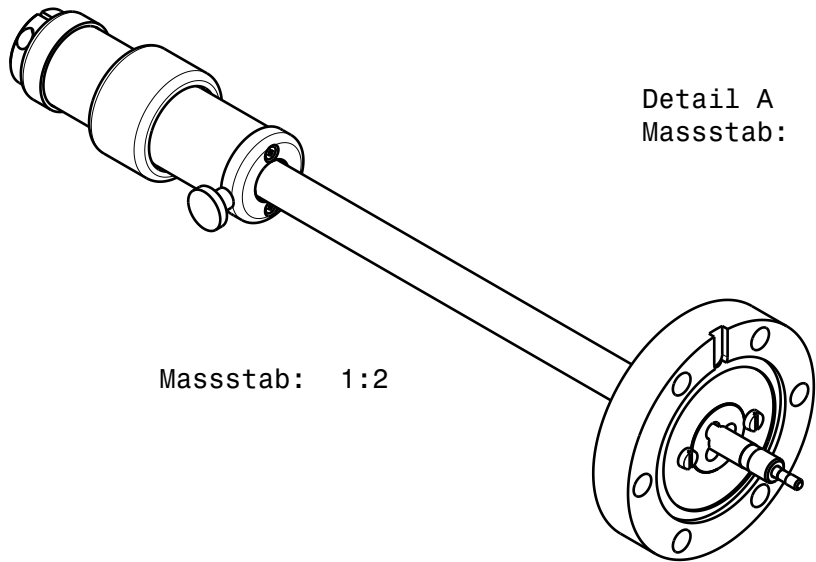
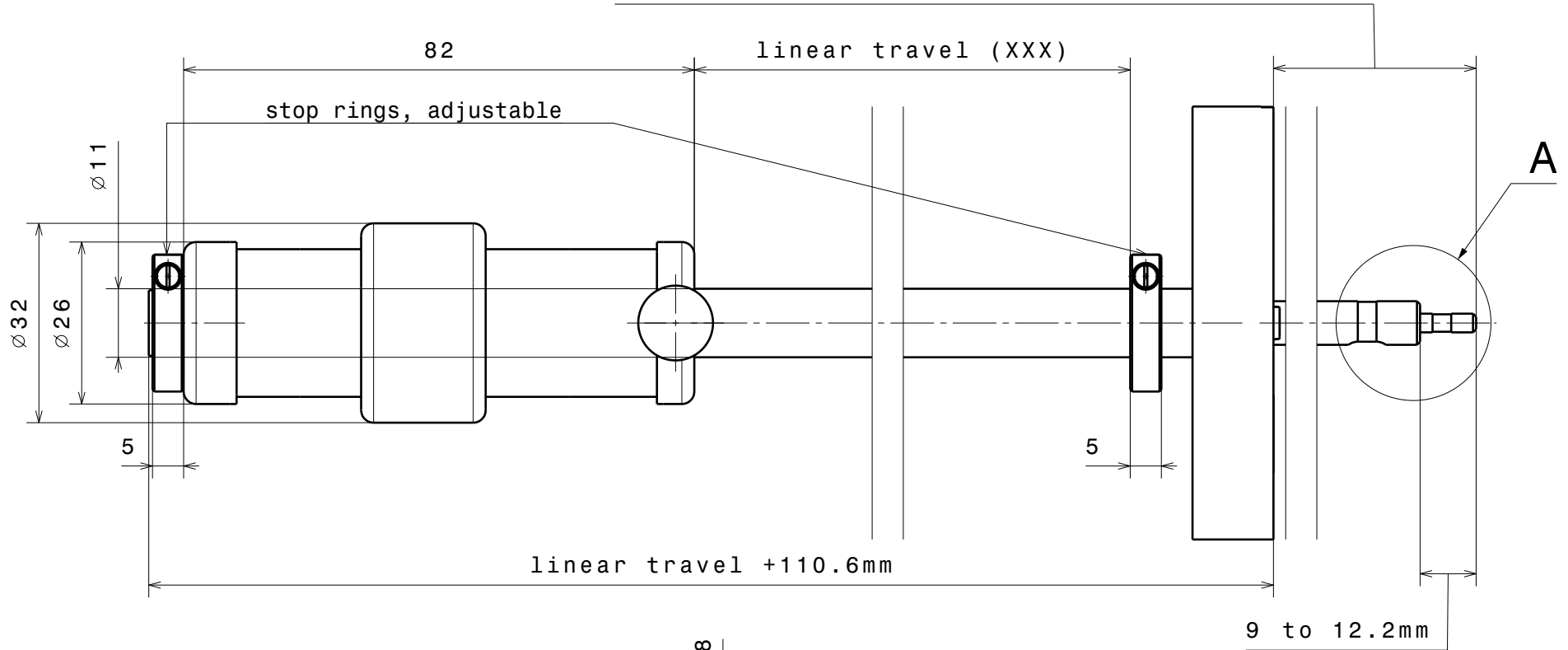
PGWMS(CUST) :  
カスタマイズピンサー



ADMRL :  
回転リミッター

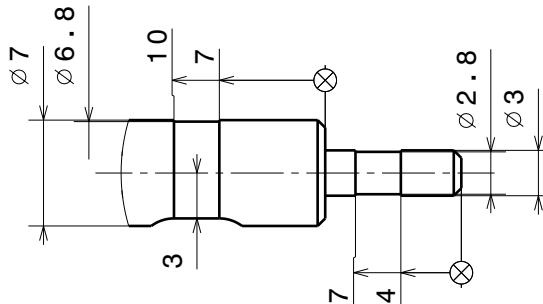


retracted length (YYY standard = 30mm)



Masstab: 1:2

Detail A  
Masstab: 2:1

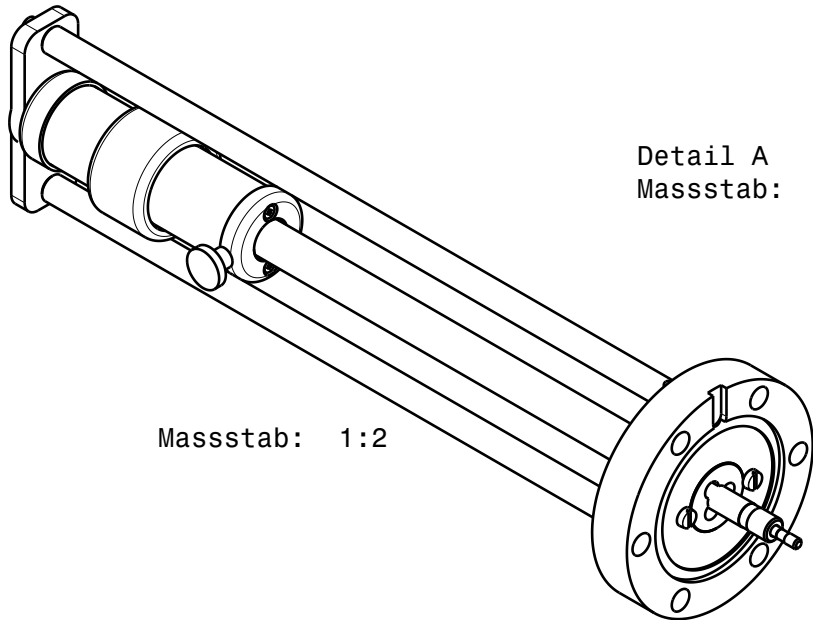
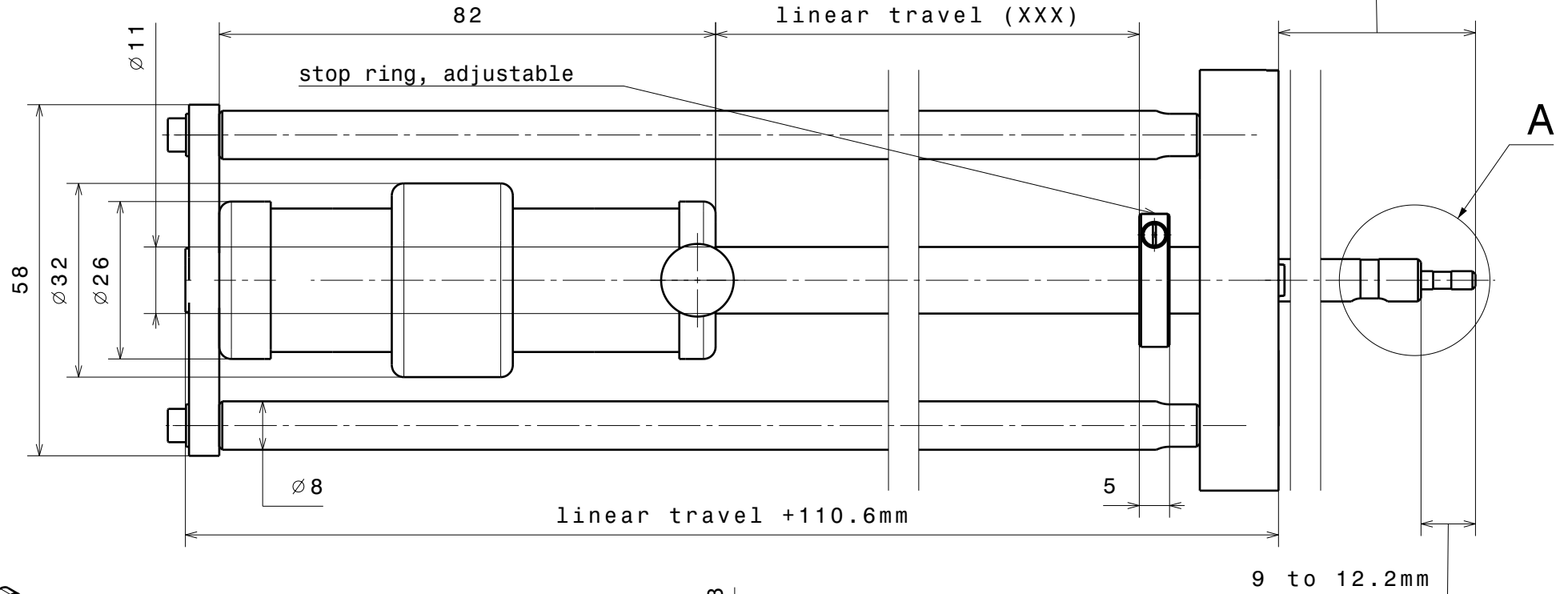


**Specification**

bakeout temperature max. 150°C  
He leak rate < 1.0 · 10<sup>-10</sup> mbar  
continuous rotation  
torque 0.4 Nm  
linear force 23 N

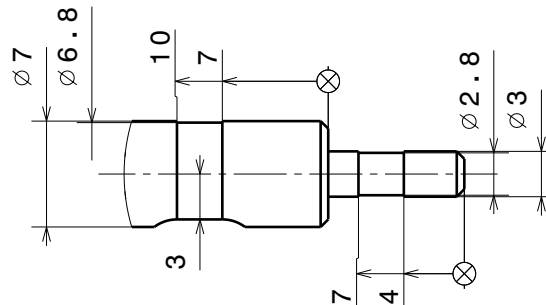
Material: .....	nominal	over	1	6	30	100	300	1000
Dual Shaft Linear/ Rotary Feedthrough DN40CF	dimension up to		6	30	100	300	1000	2000
	tolerance ±		0.05	0.1	0.3	0.5	0.8	1.2
MDG	Scale	Drawn	von Gunten					
<b>Ferrovac GmbH</b> CH-8050 Zurich	1:1	Date	22.11.2010					
		Revised	.....					
THE INFORMATION CONTAINED IN THIS DRAWING IS THE SOLE PROPERTY OF FERROVAC GMBH. ANY REPRODUCTION IN PART OR AS WHOLE WITHOUT OUR PERMISSION IS PROHIBITED.			<b>MDG40</b> sheet 1/1					

retracted length (YYY standard = 30mm)



Masstab: 1:2

Detail A  
Masstab: 2:1

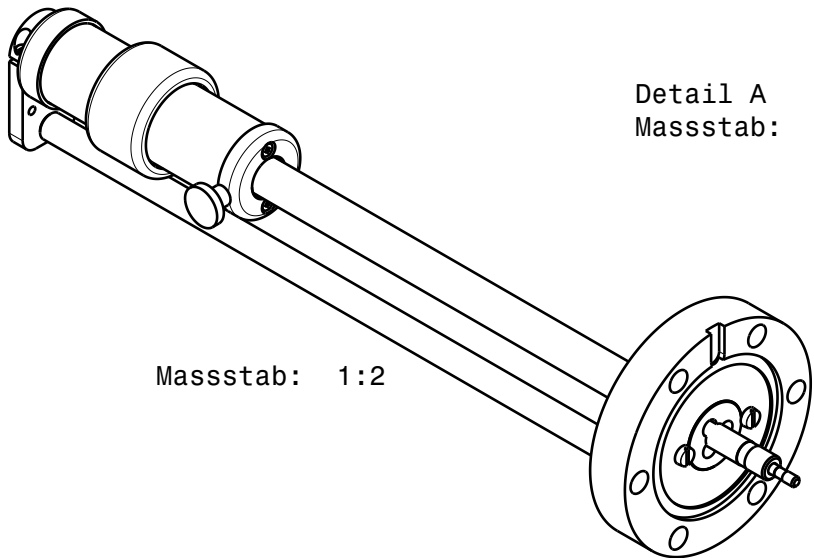
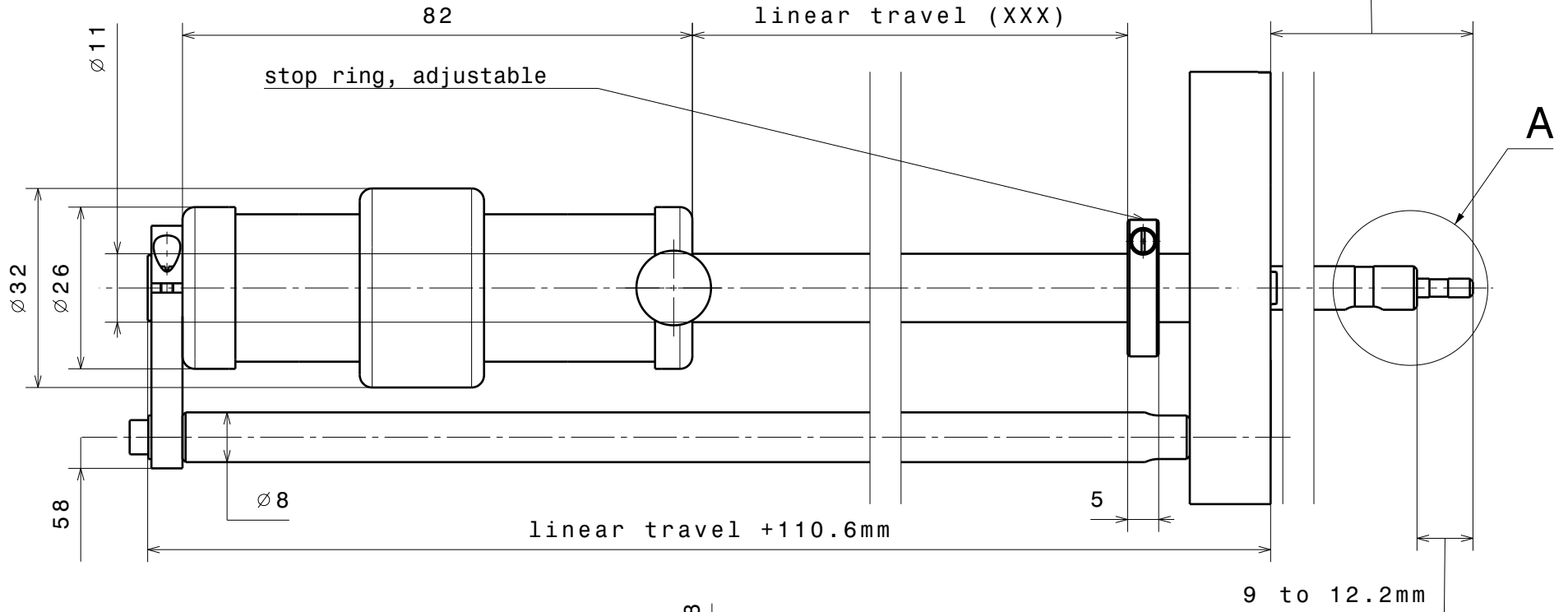


**Specification**

bakeout temperature max. 150°C  
He leak rate < 1.0 · 10<sup>-10</sup> mbar  
continuous rotation  
torque 0.4 Nm  
linear force 23 N

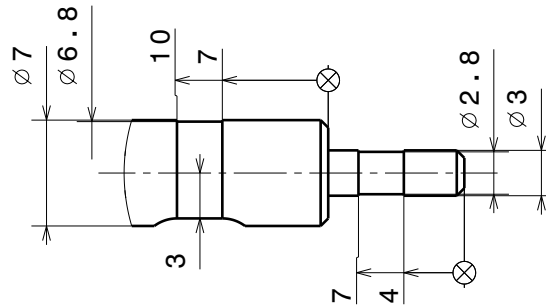
Material: .....	nominal	over	1	6	30	100	300	1000
Dual Shaft Linear/ Rotary Feedthrough DN40CF with TSMD MDG	dimension up to		6	30	100	300	1000	2000
	tolerance ±		0.05	0.1	0.3	0.5	0.8	1.2
Ferrovac GmbH CH-8050 Zurich	Scale	Drawn	von Gunten					
	1:1	Date	22.11.2010					
		Revised	.....					
THE INFORMATION CONTAINED IN THIS DRAWING IS THE SOLE PROPERTY OF FERROVAC GMBH. ANY REPRODUCTION IN PART OR AS WHOLE WITHOUT OUR PERMISSION IS PROHIBITED.		MDG40-TSMD		sheet 1/1				

retracted length (YYY standard = 30mm)



Masstab: 1:2

Detail A  
Masstab: 2:1

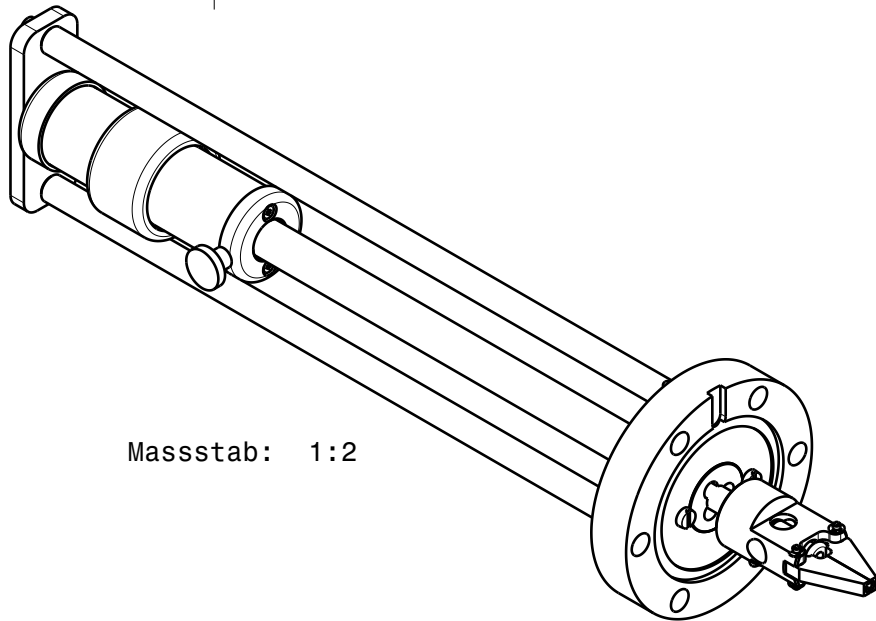
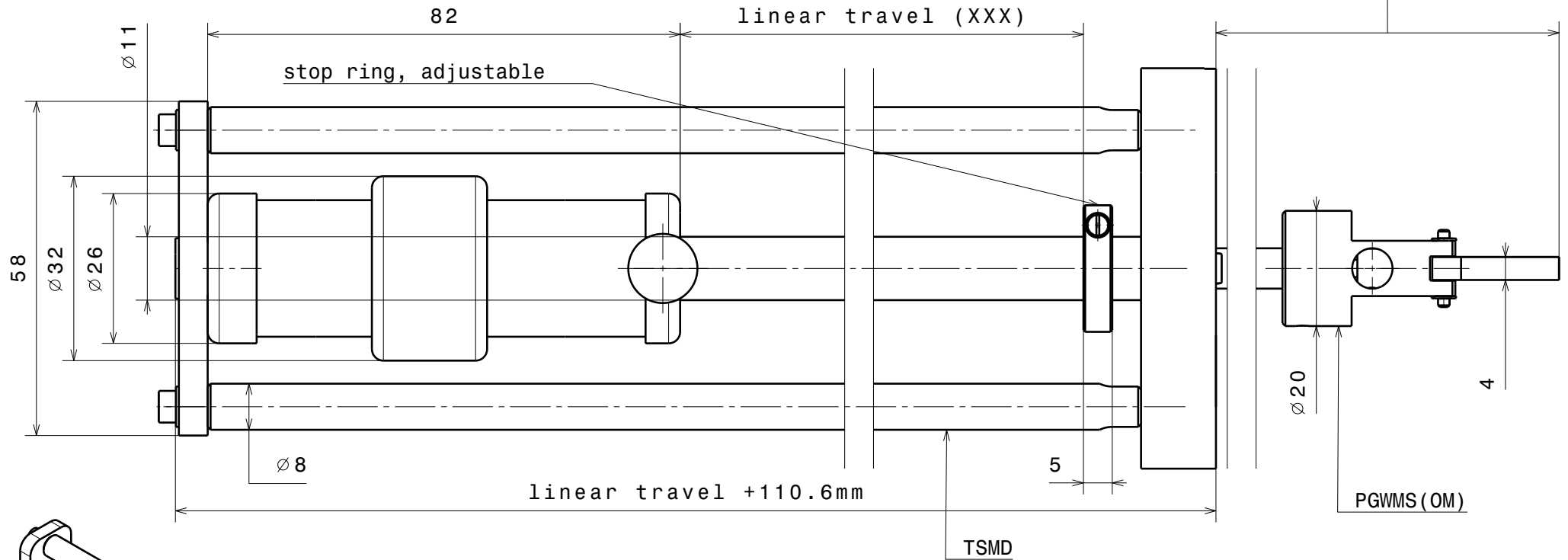


**Specification**

bakeout temperature max. 150°C  
He leak rate < 1.0 · 10<sup>-10</sup> mbar  
continuous rotation  
torque 0.4 Nm  
linear force 23 N

Material: .....	nominal over	1	6	30	100	300	1000
Dual Shaft Linear/ Rotary Feedthrough DN40CF with TSMDH MDG	dimension up to	6	30	100	300	1000	2000
	tolerance ±	0.05	0.1	0.3	0.5	0.8	1.2
Ferrovac GmbH CH-8050 Zurich	Scale	Drawn	von Gunten				
	1:1	Date	22.11.2010				
		Revised	.....				
THE INFORMATION CONTAINED IN THIS DRAWING IS THE SOLE PROPERTY OF FERROVAC GMBH. ANY REPRODUCTION IN PART OR AS WHOLE WITHOUT OUR PERMISSION IS PROHIBITED.	MDG40-TSMDH		sheet 1/1				

retracted length (YYY standard = 57mm)

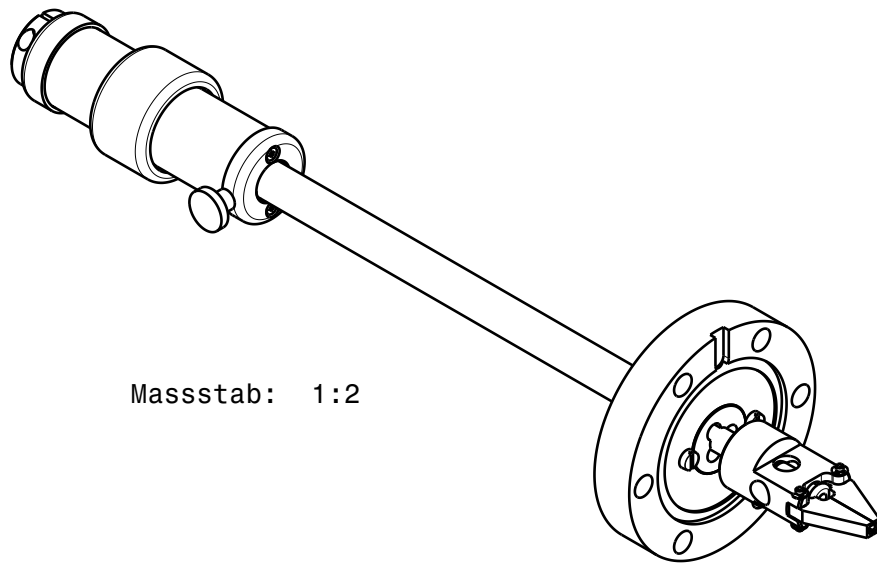
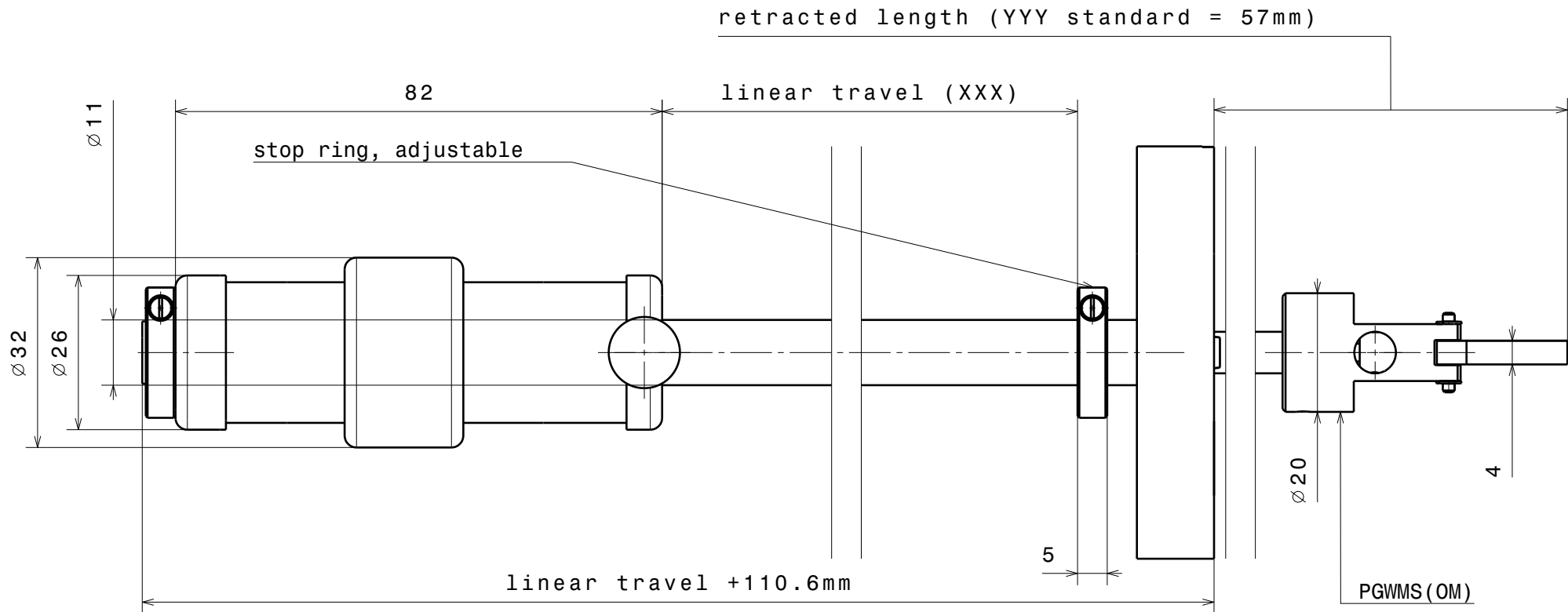


Masstab: 1:2

### Specification

bakeout temperature max. 150°C  
 He leak rate < 1.0 · 10<sup>-10</sup> mbar  
 continuous rotation  
 torque 0.4 Nm  
 linear force 23 N

Material: .....	nominal	over	1	6	30	100	300	1000
Feedthrough MDG40 with Pincer Grip PGWS(OM) and TSMD	dimension up to		6	30	100	300	1000	2000
	tolerance ±		0.05	0.1	0.3	0.5	0.8	1.2
MDG	Scale	Drawn	von Gunten					
<b>Ferrovac GmbH</b> CH-8050 Zurich	1:1	Date	30.11.2010					
		Revised	.....					
THE INFORMATION CONTAINED IN THIS DRAWING IS THE SOLE PROPERTY OF FERROVAC GMBH. ANY REPRODUCTION IN PART OR AS WHOLE WITHOUT OUR PERMISSION IS PROHIBITED.			MDG40-PGWS(OM) - TSMD sheet 1/1					



Masstab: 1:2

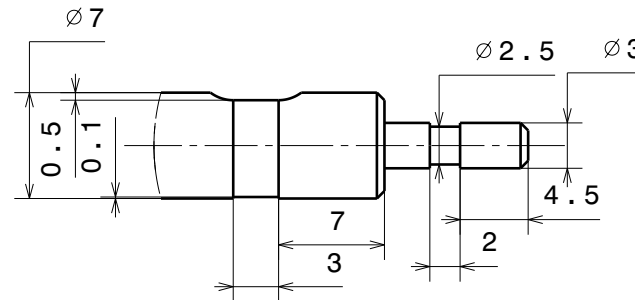
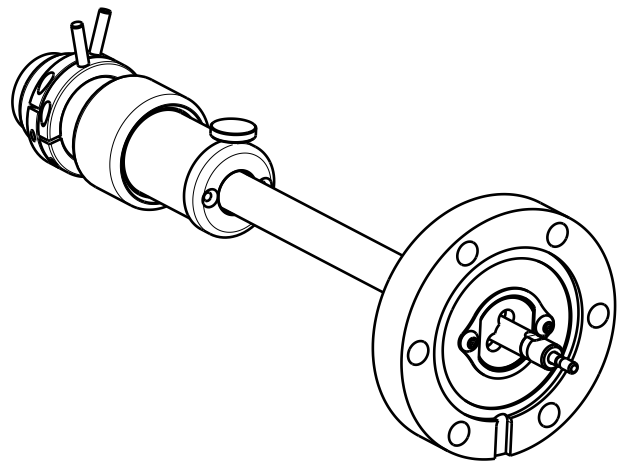
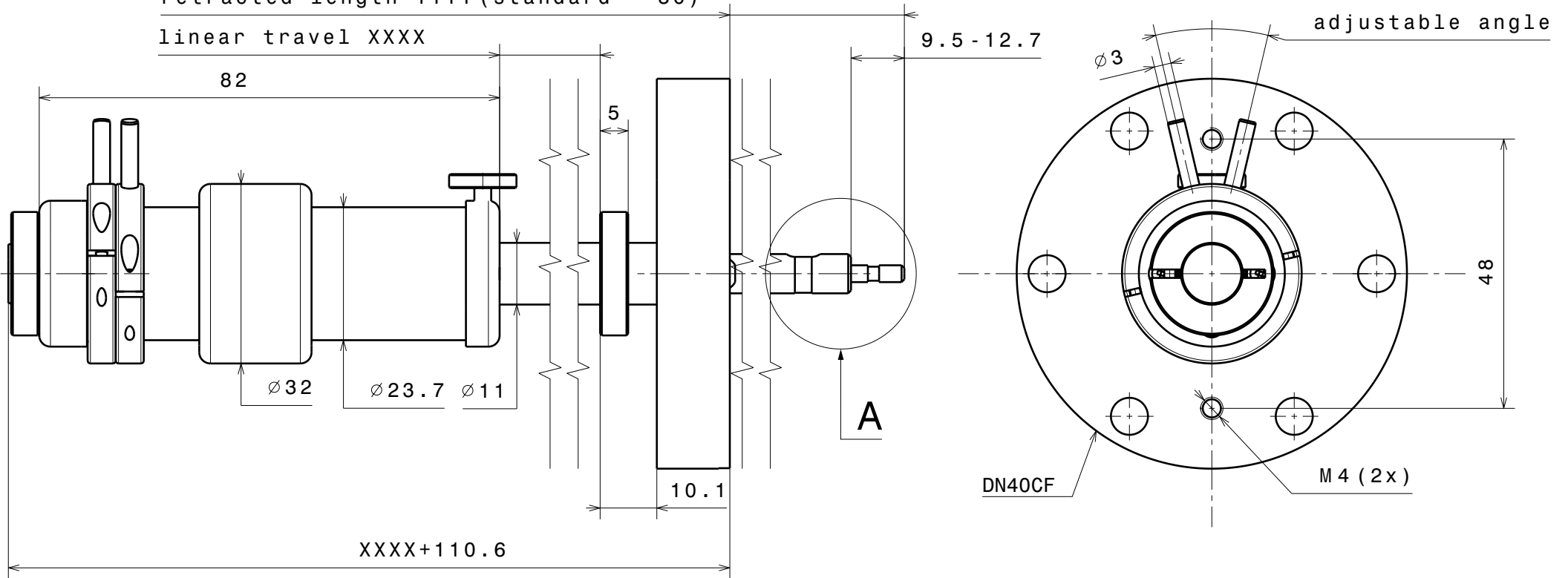
### Specification

bakeout temperature max. 150°C  
 He leak rate <math> < 1.0 \cdot 10^{-10}</math> mbar  
 continuous rotation  
 torque 0.4 Nm  
 linear force 23 N

Material: .....	nominal	over	1	6	30	100	300	1000
Feedthrough MDG40 with Pincer Grip PGWMS(OM)	dimension up to		6	30	100	300	1000	2000
	tolerance ±		0.05	0.1	0.3	0.5	0.8	1.2
MDG	Scale	Drawn	von Gunten					
<b>Ferrovac GmbH</b> CH-8050 Zurich	1:1	Date	30.11.2010					
		Revised	.....					
THE INFORMATION CONTAINED IN THIS DRAWING IS THE SOLE PROPERTY OF FERROVAC GMBH. ANY REPRODUCTION IN PART OR AS WHOLE WITHOUT OUR PERMISSION IS PROHIBITED.			MDG40-PGWMS(OM)					
			sheet 1/1					

retracted length YYYY (standard = 30)

linear travel XXXX



A  
(2:1)

$\sqrt{\text{Ra } 0.8}$  (✓)   
  $\swarrow +0.2$    
  $\searrow -0.1$    
  $\swarrow +0.1$    
  $\searrow -0.2$

Material: ....		nominal $\leq 30\text{mm}$	DIN ISO 2768-f-H
		dimensions $> 30\text{mm}$	DIN ISO 2768-m-K excluding Sym./Runout
Dual Shaft Linear/Rotary Feedthrough DN40CF with Rotation Lock		Sym./Runout $> 30\text{mm}$	DIN ISO 2768-H
MDG40 (RL)		formed part dimensions	DIN ISO 2768-f-H
		Scale	Drawn von Gunten
		Date	22.11.2010
		Changed	14.08.2023 CW
<b>Ferrovac</b>		1:1	<b>MDG40 (RL)</b>
<b>CH-8050 Zurich</b>			
<small>THE INFORMATION CONTAINED IN THIS DRAWING IS THE SOLE PROPERTY OF FERROVAC. ANY REPRODUCTION IN PART OR AS WHOLE WITHOUT OUR PERMISSION IS PROHIBITED.</small>		Rev.	B
		A4 sheet 1/1	



### MDG Deflection vs Extended Length at different Loads

